

THE DIPTERA OF THE TERRITORY OF NEW GUINEA. X.

FAMILY CERATOPOGONIDAE.

By J. W. S. MACFIE, M.A., D.Sc., F.R.E.S.

(Communicated by Frank H. Taylor, F.R.E.S., F.Z.S.)

(Two Text-figures.)

[Read 30th August, 1939.]

STYLOCONOPS ALBIVENTRIS (de Meij.).

Tijdschr. voor Entomol., lviii, 1915, 98.

New Guinea: Aitape, June 1938, 68 ♀ (S. H. Christian). New Britain: Rabaul, no other data, 11 ♀ (F. H. Taylor).

FORCIPOMYIA PUNCTUM-ALBUM Kieffer.

Ann. Mus. Nat. Hung., xv, 1917, 178.

New Britain: Rabaul, no other data, 1 ♂, 1 ♀ (damaged), (F. H. Taylor).

These insects probably belong to the same species as those described by Kieffer (1917) for which he proposed the name *F. punctum-album*. The details which should be added to his description I should prefer to defer until further material is available for study, because the female in this collection is fragmentary. It may be stated at once, however, that there are no definite scales, no modified tibial spines, that the T.R. is about 0.7, and that the harpes of the male are long, slender rods with filiform ends.

CULICOIDES sp. near MOLLIS Edw.

New Britain: Rabaul, no other data, 2 ♀ (F. H. Taylor).

These insects are probably the same as *C. mollis*, a species taken in Samoa, and described by Edwards (1928). They differ, however, from the specimens examined by Edwards, and from others which I have assigned to the same species on previous occasions, in having paler, almost uniformly pale brown, legs.

CULICOIDES RABAULI, n. sp. Fig. 1.

A dark brown species with the wings densely clothed with macrotrichia and characteristically adorned.

♀. Length of wing about 1.4 mm., greatest breadth 0.6 mm.

Head very dark brown. Palpi dark brown, third segment much inflated about middle, with large but relatively shallow pit; lengths of last three segments about 28, 10, and 11 units* respectively. Antennae uniformly darkish brown; segments 4-10 oval, ranging from about 10 by 9 to 9 by 7 units; 11-14 more elongate, sub-cylindrical, sub-equal, averaging about 22 by 7 units; 15 about 31 by 7 units, without stylet. The combined lengths of segments 4-10 and 11-15 about 65 and 118 units respectively. *Thorax* dark brown, the adornment consisting of large patches, not small spots. Scutellum very dark brown, bearing 4 bristles, and several small hairs. *Wings* (Fig. 1) densely clothed with macrotrichia (not shown

* The unit used is approximately 3.6 μ.

in diagram) which cover almost whole surface excepting radial areas, extend practically to base between M and Cu, and are very numerous in anal cell. Adornment characteristic, as shown in diagram, the markings in the region of the fork of Cu being particularly notable. Halteres with white or creamy knobs. *Legs* rather dark, femora and tibiae almost entirely dark brown, with only faint traces of narrow paler bands on each side of the dark knees. T.R. about 2.2. Form of segments and claws normal. *Abdomen* dark brown with a greenish tint. Spermathecae two, well chitinized, obovate, sub-equal, partially collapsed in the unique specimen but total length probably about 55μ , and greatest breadth 42μ .

New Britain: Rabaul, no other data, 1 ♀ (F. H. Taylor).

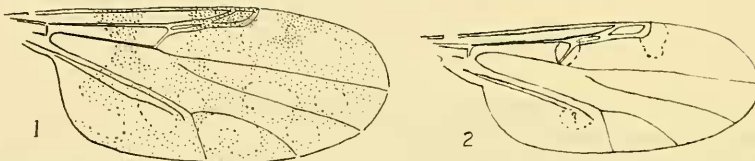


Fig. 1.—*Culicoides rabauli*, n. sp. Diagram to show adornment of wing of female.

Fig. 2.—*Culicoides melanesiae*, n. sp. Diagram to show adornment of wing of female.

CULICOIDES MELANESIAE, n. sp. Fig. 2.

A dark brown species with the wings densely clothed with macrotrichia and adorned with only two distinct pale spots.

♀. Length of wing about 1.2 mm., greatest breadth 0.5 mm.

Head very dark brown. Palpi dark brown, third segment without pit; lengths of last three segments about 18, 10, and 10 units respectively. Antennae uniformly dark brown; segments 4–10 oval to vasiform, ranging from about 10 by 7 to 12 by 6 units; 11–14 more elongate, sub-cylindrical, averaging about 17 by 5–6 units; 15 about 22 by 5–6 units, without stylet. The combined lengths of segments 4–10 and 11–15 about 85 and 89 units respectively. *Thorax* very dark brown, the adornment indistinct but not composed of small spots. Scutellum very dark brown, bearing 4 bristles, and several small hairs. *Wings* (Fig. 2) densely clothed with macrotrichia (not shown in diagram) which cover almost whole surface with exception of radial areas, extend practically to base between branches of M and Cu, and are very numerous in anal cell. Adornment as shown in diagram, consisting of two small, clearly defined, pale spots, the one just beyond end of costa, the other covering cross-vein. The latter spot does not extend anteriorly as far as the margin of the wing, and covers only a small part of first radial cell. There is, too, a suggestion of a pale spot in the anal cell at the end of the anal vein. Halteres with pale brownish knobs. *Legs* rather dark brown, with dark knees, but tibiae of hind legs with a distinct narrow, yellowish, band at both base and apex. T.R. about 2.2. Form of segments and claws normal; fourth tarsal segments cylindrical, about same length as fifth. *Abdomen* very dark brown. Spermathecae two, well chitinized, obovate, sub-equal, total length about 78μ , and greatest breadth 57μ .

New Britain: Rabaul, no other data, 1 ♀ (F. H. Taylor).

This insect resembles in some respects *C. flumineus* Macfie, a species taken in Malaya, but the wings are without the indistinct pale spots at the periphery present in that species. In *C. flumineus*, too, the third palpal segment is furnished with a large, shallow pit.